

Rajarhat's first

# GARDEN HOMES

project by



## GARDENIUM

BUNGALOWS, DUPLEX & APARTMENT

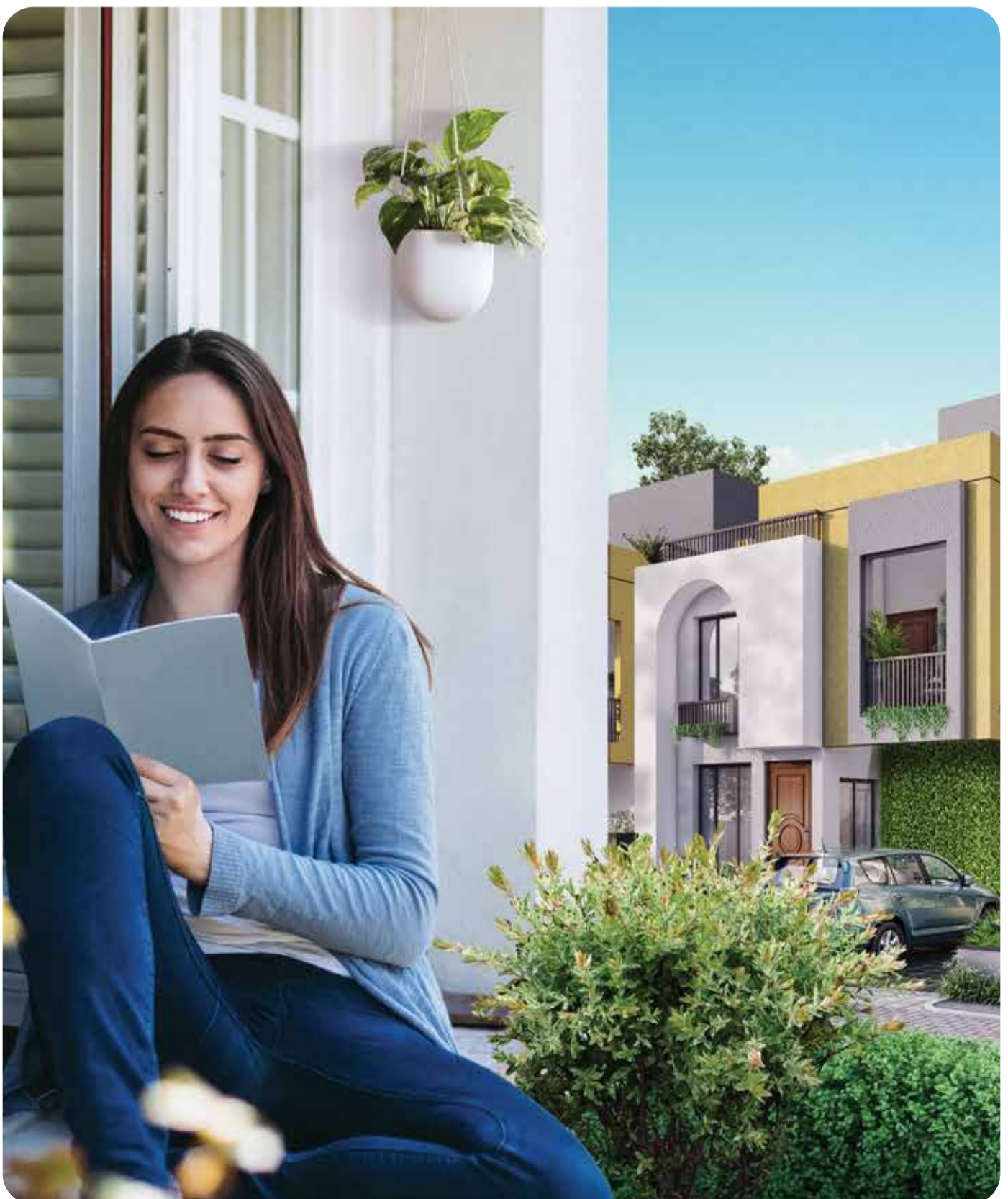
AT RAJARHAT 6 LANE HIGHWAY



**BANYAN**  
BUNGALOW

FLOOR PLAN

# GARDEN, HOME & YOU





# BANYAN

## BUNGALOW

1.34 katha | 3BHK  
1304 Sq.Ft. Total built up area



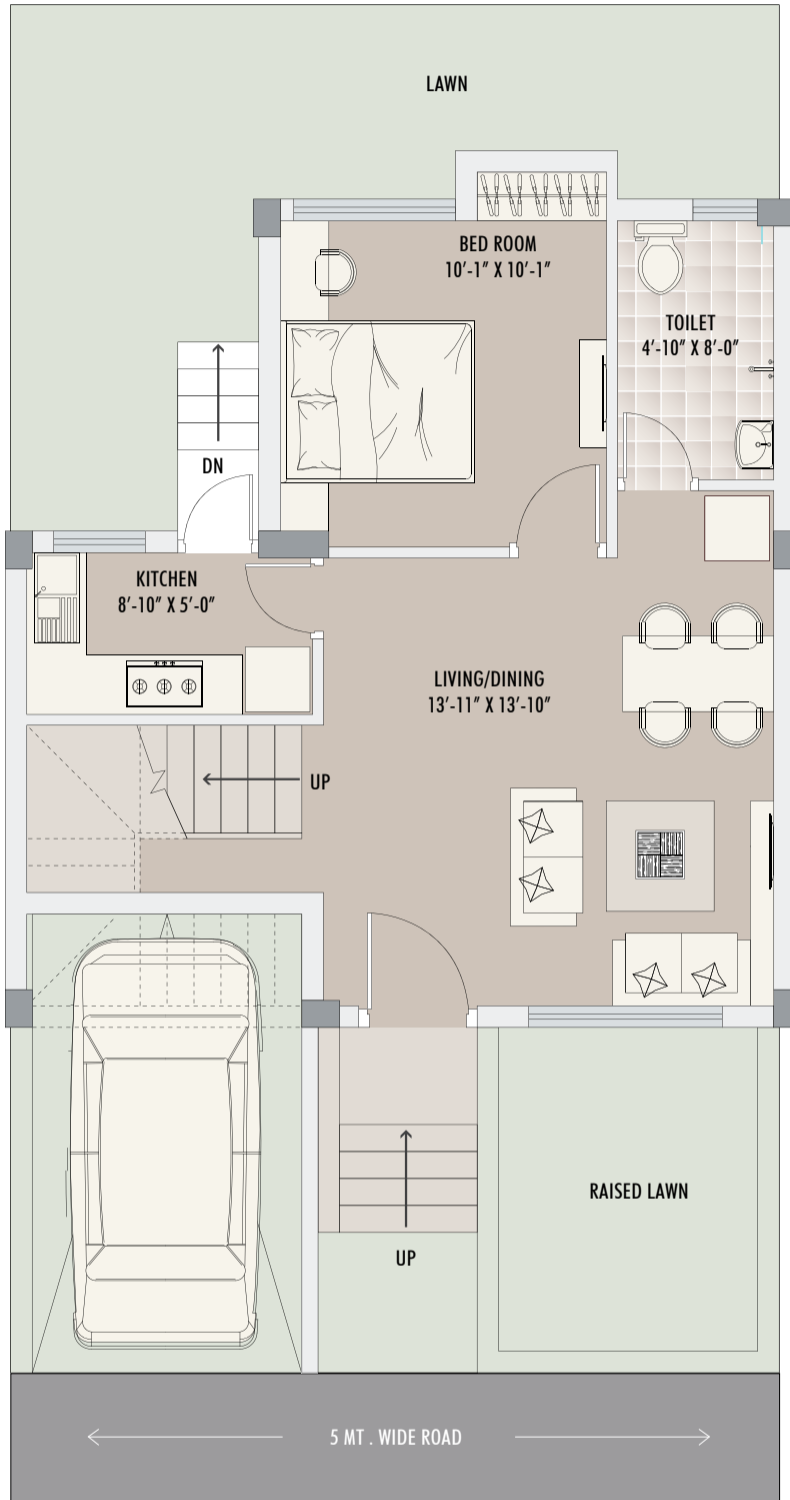
**ONE WAY OR ANOTHER  
A GARDEN IS ALWAYS  
NEXT TO YOU.**

91 SQ.FT.  
FRONT  
GARDEN

191 SQ.FT.  
BACKYARD  
GARDEN

396 SQ.FT.  
PRIVATE TERRACE  
AREA





**GROUND FLOOR**

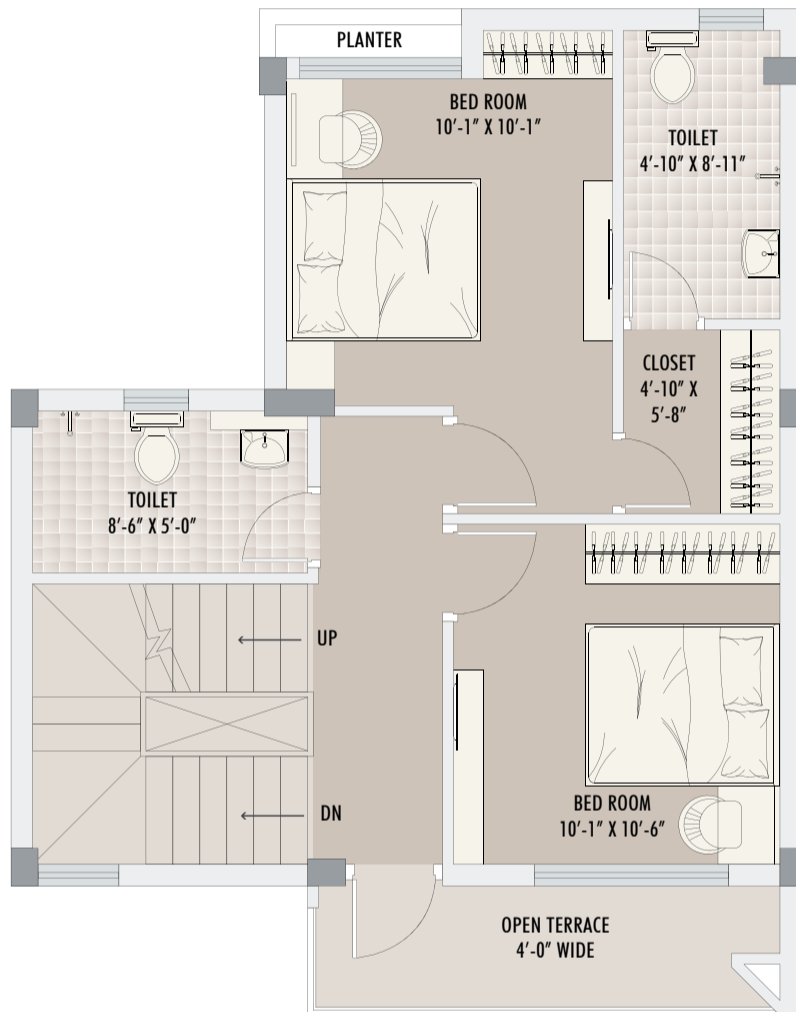
579 SQ.FT.  
BUILT UP AREA

469 SQ.FT.  
CARPET AREA

96 SQ.FT.  
PARKING AREA

91 SQ.FT.  
FRONT GARDEN

191 SQ.FT.  
BACKYARD GARDEN

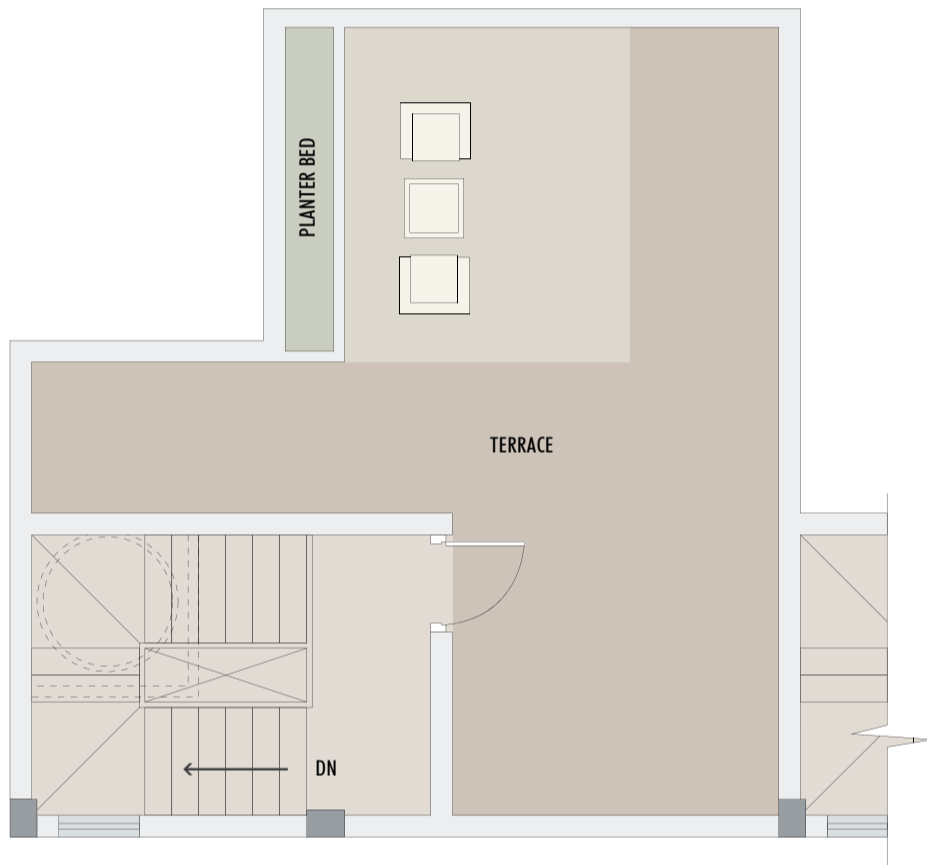


**FIRST FLOOR**

521 SQ.FT.  
BUILT UP AREA

468 SQ.FT.  
CARPET AREA

58 SQ.FT.  
OPEN TERRACE AREA



**ROOFTOP**

132 SQ.FT.  
STAIR - HEAD ROOM  
BUILT UP AREA

105 SQ.FT.  
STAIR - HEAD ROOM  
CARPET AREA

396 SQ.FT.  
PRIVATE TERRACE  
AREA



**GROUND FLOOR**



**FIRST FLOOR**



**ROOFTOP**



# GARDENIUM

BUNGALOWS, DUPLEX & APARTMENT



MARKETING PARTNER



98300 11551

[www.nkrealtors.com](http://www.nkrealtors.com)